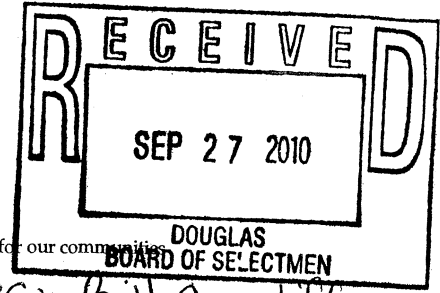
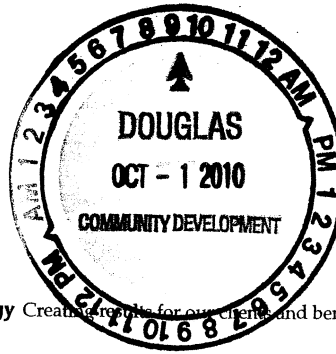


Transportation
Land Development
Environmental
Services



imagination | innovation | energy



cc: Bill Cundiff
Vanasse Hangen Brustlin, Inc.

September 21, 2010

Town of Douglas, Board of Selectmen
Douglas Municipal Center
29 Depot Street
Douglas, MA 01516

Re: Douglas Woods Wind Farm
Make Improvements to Old Douglas Road

Scheduled For
BOS MTG ON
10/1/10 @ 7pm
5

Dear Members of the Board of Selectmen:

Vanasse Hangen Brustlin, Inc. (VHB) has prepared this letter on behalf of our Client, American Pro Wind (APW), to outline the need for a gravel access road to be constructed by APW as part of the Douglas Wind Farm Project to cross a small portion of the existing Old Douglas Road. Attached for your reference are an overall plan of the Project and a more detailed plan (the Plans) of the area in question.

As shown on the Plans, the Project gravel access road will cross Old Douglas Road at the existing grade and will be designed to not impact or impair the public's ability to travel on Old Douglas Road (to the extent that it is currently passable). Old Douglas Road in the vicinity of the crossing is an unpaved dirt road in poor condition that appears to have little if any vehicular traffic. The construction of the crossing will include the excavation of the top 1 to 2 feet of existing gravel and the placement of compacted dense-graded gravel to improve the structural stability of Old Douglas Road and allow it to support the Project construction vehicles.

As shown on the Plans, the Project will also include the installation of gates and stop signs on our gravel access roads where they cross Old Douglas Road. The Plans are included in the overall plan set prepared by VHB and submitted to the Douglas Planning Board as part of the Site Plan Review process.

We hereby request that the Board of Selectmen provide authorization for APW to cross and make upgrades to that section of Old Douglas Road as described above in accordance with the Selectmen's authority as Highway Commissioners provided by Mass. General Laws chapter 82§21.). As we are in the middle of Site Plan Review, the Board's action on this request at its next regularly scheduled meeting would be greatly appreciated.

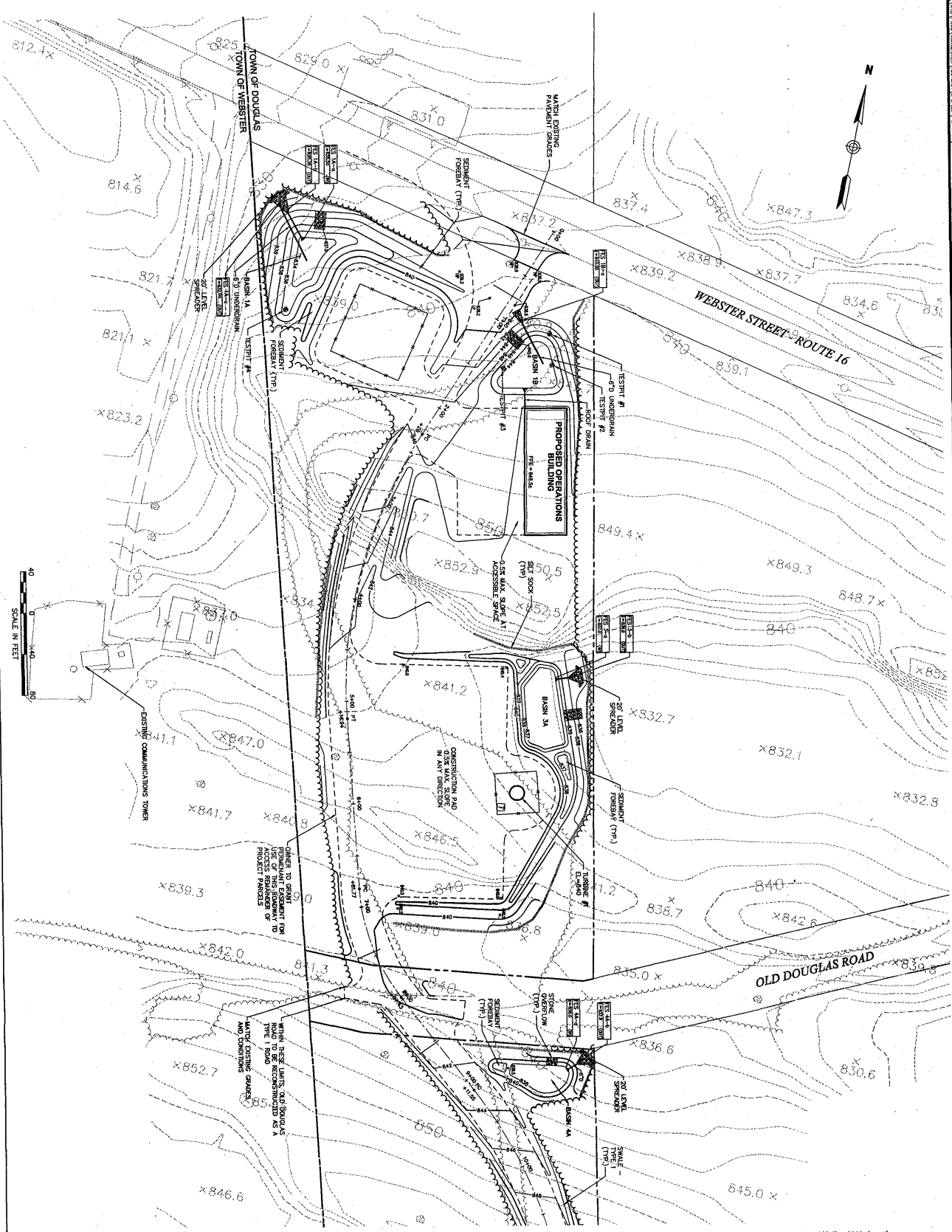
Respectfully submitted,

VANASSE HANGEN BRUSTLIN, INC.

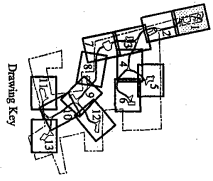
Craig C. Lizotte, P.E.
Manager Land Development Services

cc: Maurice Caparrotta, Bill Cundiff, Mike Guzinski, Steve Zisk, Pam Brown, Rod Jaré

Union Station, Suite 219
2 Washington Square
Worcester, Massachusetts 01604
508.752.1001 • FAX 508.752.1276
email: info@vhb.com
www.vhb.com



SCALE IN FEET
0 30 60 90



Vanneste Hansen Brustin, Inc.
 Transportation
 Land Development
 Environmental Services
 Urban, State, State 19
 2 Waukegan Square
 Waukegan, Massachusetts 01084
 508.724.0800 • FAX 508.724.1206



Not Approved for Construction
 Grading and
 Drainage Plan

Local Permits

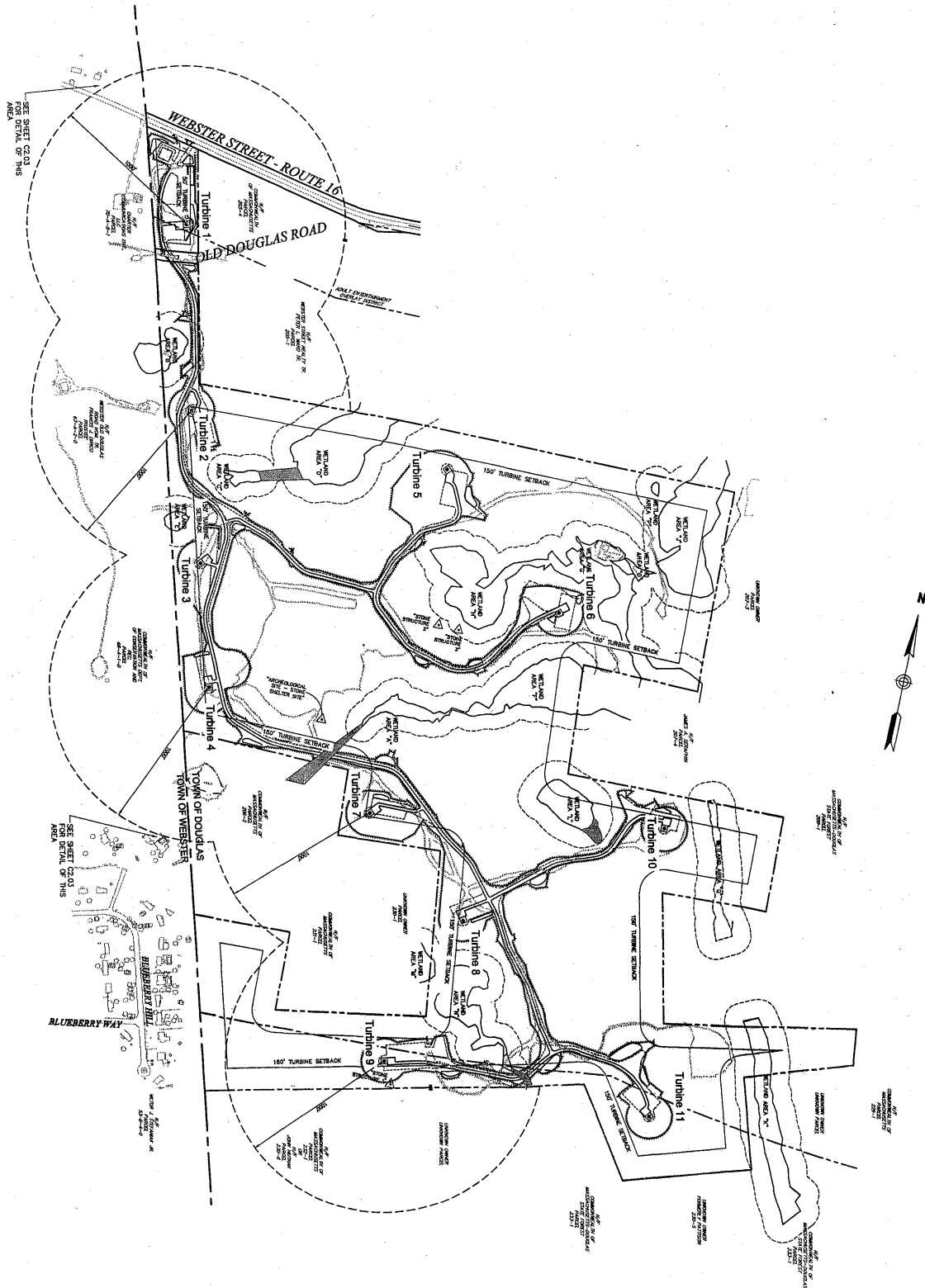
Waukegan Street
 Douglas, Massachusetts

Douglas Woods
 Wind Farm

NO.	DATE	BY	DESCRIPTION
1	10/22/09	W. Hansen	PRELIMINARY
2	11/10/09	W. Hansen	REVISED
3	12/15/09	W. Hansen	REVISED
4	01/20/10	W. Hansen	REVISED
5	02/19/10	W. Hansen	REVISED
6	03/19/10	W. Hansen	REVISED
7	04/19/10	W. Hansen	REVISED
8	05/19/10	W. Hansen	REVISED
9	06/19/10	W. Hansen	REVISED
10	07/19/10	W. Hansen	REVISED
11	08/19/10	W. Hansen	REVISED
12	09/19/10	W. Hansen	REVISED
13	10/19/10	W. Hansen	REVISED
14	11/19/10	W. Hansen	REVISED
15	12/19/10	W. Hansen	REVISED
16	01/19/11	W. Hansen	REVISED
17	02/19/11	W. Hansen	REVISED
18	03/19/11	W. Hansen	REVISED
19	04/19/11	W. Hansen	REVISED
20	05/19/11	W. Hansen	REVISED
21	06/19/11	W. Hansen	REVISED
22	07/19/11	W. Hansen	REVISED
23	08/19/11	W. Hansen	REVISED
24	09/19/11	W. Hansen	REVISED
25	10/19/11	W. Hansen	REVISED
26	11/19/11	W. Hansen	REVISED
27	12/19/11	W. Hansen	REVISED
28	01/19/12	W. Hansen	REVISED
29	02/19/12	W. Hansen	REVISED
30	03/19/12	W. Hansen	REVISED
31	04/19/12	W. Hansen	REVISED
32	05/19/12	W. Hansen	REVISED
33	06/19/12	W. Hansen	REVISED
34	07/19/12	W. Hansen	REVISED
35	08/19/12	W. Hansen	REVISED
36	09/19/12	W. Hansen	REVISED
37	10/19/12	W. Hansen	REVISED
38	11/19/12	W. Hansen	REVISED
39	12/19/12	W. Hansen	REVISED
40	01/19/13	W. Hansen	REVISED
41	02/19/13	W. Hansen	REVISED
42	03/19/13	W. Hansen	REVISED
43	04/19/13	W. Hansen	REVISED
44	05/19/13	W. Hansen	REVISED
45	06/19/13	W. Hansen	REVISED
46	07/19/13	W. Hansen	REVISED
47	08/19/13	W. Hansen	REVISED
48	09/19/13	W. Hansen	REVISED
49	10/19/13	W. Hansen	REVISED
50	11/19/13	W. Hansen	REVISED
51	12/19/13	W. Hansen	REVISED
52	01/19/14	W. Hansen	REVISED
53	02/19/14	W. Hansen	REVISED
54	03/19/14	W. Hansen	REVISED
55	04/19/14	W. Hansen	REVISED
56	05/19/14	W. Hansen	REVISED
57	06/19/14	W. Hansen	REVISED
58	07/19/14	W. Hansen	REVISED
59	08/19/14	W. Hansen	REVISED
60	09/19/14	W. Hansen	REVISED
61	10/19/14	W. Hansen	REVISED
62	11/19/14	W. Hansen	REVISED
63	12/19/14	W. Hansen	REVISED
64	01/19/15	W. Hansen	REVISED
65	02/19/15	W. Hansen	REVISED
66	03/19/15	W. Hansen	REVISED
67	04/19/15	W. Hansen	REVISED
68	05/19/15	W. Hansen	REVISED
69	06/19/15	W. Hansen	REVISED
70	07/19/15	W. Hansen	REVISED
71	08/19/15	W. Hansen	REVISED
72	09/19/15	W. Hansen	REVISED
73	10/19/15	W. Hansen	REVISED
74	11/19/15	W. Hansen	REVISED
75	12/19/15	W. Hansen	REVISED
76	01/19/16	W. Hansen	REVISED
77	02/19/16	W. Hansen	REVISED
78	03/19/16	W. Hansen	REVISED
79	04/19/16	W. Hansen	REVISED
80	05/19/16	W. Hansen	REVISED
81	06/19/16	W. Hansen	REVISED
82	07/19/16	W. Hansen	REVISED
83	08/19/16	W. Hansen	REVISED
84	09/19/16	W. Hansen	REVISED
85	10/19/16	W. Hansen	REVISED
86	11/19/16	W. Hansen	REVISED
87	12/19/16	W. Hansen	REVISED
88	01/19/17	W. Hansen	REVISED
89	02/19/17	W. Hansen	REVISED
90	03/19/17	W. Hansen	REVISED
91	04/19/17	W. Hansen	REVISED
92	05/19/17	W. Hansen	REVISED
93	06/19/17	W. Hansen	REVISED
94	07/19/17	W. Hansen	REVISED
95	08/19/17	W. Hansen	REVISED
96	09/19/17	W. Hansen	REVISED
97	10/19/17	W. Hansen	REVISED
98	11/19/17	W. Hansen	REVISED
99	12/19/17	W. Hansen	REVISED
100	01/19/18	W. Hansen	REVISED

C4.01

10/13/11



Kansas Hengen Brustin, Inc.

Transportation
Land Development
Environmental Services
Union Station, Suite 219
2 Washington Square
Wichita, Kansas 67202
316.261.1234 FAX 316.261.1235

NO.	DATE	DESCRIPTION	BY	CHKD.
1	09/22/10	ISSUED FOR PERMITTING	JL	JL
2	09/22/10	ISSUED FOR PERMITTING	JL	JL
3	09/22/10	ISSUED FOR PERMITTING	JL	JL
4	09/22/10	ISSUED FOR PERMITTING	JL	JL
5	09/22/10	ISSUED FOR PERMITTING	JL	JL
6	09/22/10	ISSUED FOR PERMITTING	JL	JL
7	09/22/10	ISSUED FOR PERMITTING	JL	JL
8	09/22/10	ISSUED FOR PERMITTING	JL	JL
9	09/22/10	ISSUED FOR PERMITTING	JL	JL
10	09/22/10	ISSUED FOR PERMITTING	JL	JL
11	09/22/10	ISSUED FOR PERMITTING	JL	JL

Wichita Street
Douglas, Massachusetts
Local Permitting
Not Approved for Construction
Overall Plan

C2.02

Scale: 3" = 50'
10/13/01
10/13/01